

MUSIC AT THE FAIR.

Perhaps in no other department of the Fair's diversionally educational scheme has the experience gained in other similar enterprises been more closely followed than in music.

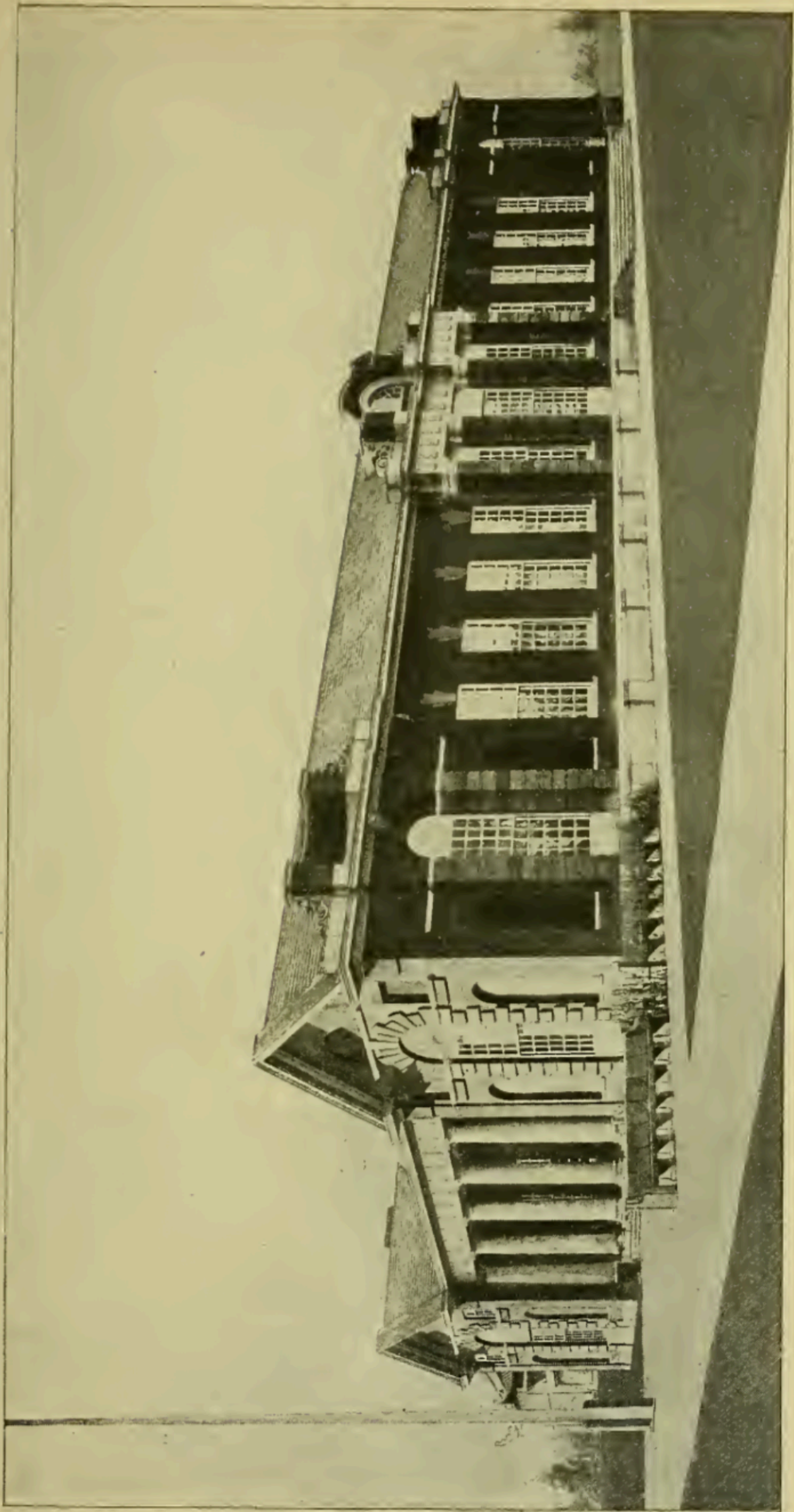
There are bandstands and music pagodas at several points of vantage on the grounds. (See "Bandstands" in article on "Information in Brief.") Here as many as three concerts take place simultaneously morning and afternoon and at hours fixed so as not to interfere with the enjoyment of the severer forms of music to whose interpretation the various orchestras address themselves in Festival Hall. In these stands are heard bands like those of Sousa, Innes, Sorrentino, Creatore, Ellery among the visitors, the official World's Fair band of St. Louis and other organizations popular in their particular sections of the country. Military music has world-famous exponents in the band of the Garde Republicaine of Paris, the Grenadier Guards band (British) of London, several of the crack regimental bands of Germany, the Boston band, and all of these, duly heralded, will discourse martial strains in the bandstands, enlivening the listeners and adding to the sum total of enjoyment derivable from a visit to the World's Fair.

The organ is the voice of sacred, solemn and stately music. In Festival Hall is the largest organ ever built. This wondrous instrument is to the layman simply inconceivably big. Tonally it represents the sounds of many orchestras, many choruses and many bands, more of all of these together than may readily be grasped by any but scientific musicians. This organ is the tonal centerpiece of the entire World's Fair scheme of music and lends an imposing dignity and artistic solidity to Festival Hall and its lofty uses. Here are to be heard, each according to prearranged dates, the world's greatest masters of the sacred keyboard from Guilmant of Paris, the dean of the organ faculty, and including all the brethren famous in this calling throughout Europe and America. These organ recitals are programmed for every day of the Fair, the charge of admission, 10 cents, being merely nominal. Mr. Charles Galloway of St. Louis is the official organist.

In Festival Hall are also held the musical festivals in honor of special events commemorative of the Louisiana Purchase, the great choral concerts in which thousands of voices conjoin and singing societies from all parts of the world, and the little children of the country's schools will vie with one another in the many prize contests that are scheduled.

Orchestralism having its thousands of votaries in this country, there are almost daily orchestra programs in Festival Hall. The World's Fair orchestra, under the direction of Mr. Alfred Ernst of the St. Louis Choral Symphony Society, consists of 80 picked instrumentalists. Mr. Ernst inclines to the popular orchestral forms and takes special delight in *morceaux de concert*, concert waltzes and the smaller symphonies. Among the famous foreign conductors who lead the Festival orchestra when it plays at The Pike concessions are Josef Hellmesberger of Vienna and Kary Komzak, also of the Austrian metropolis.

The total of the competitive purses offered by the program and awards committee of the Bureau of Music is \$30,000. In addition to all the foregoing, music, characteristic, popular and entertaining, is a feature at each of the various State buildings and the Palaces of Foreign Governments. The Pike is at all times fairly resonant with characteristic music.



BRITISH PAVILION.

Organists.

Following is a list of organists engaged for the Exposition and the dates on which they will play on the big organ in Festival Hall:

I. V. Flagler, Auburn, N. Y., June 1, 2; H. J. Zehm, Charlotte, N. C., June 3, 4; H. H. Hunt, Minneapolis, June 6, 7; N. H. Allen, Hartford, June 8, 9; H. M. Dunham, Boston, June 10, 11; H. M. Wild, Chicago, June 13, 14; Mrs. M. C. Fisher, Rochester, June 15, 16; R. H. Woodman, New York, June 17, 18; G. M. Dethier, New York, June 20, 21; H. Parker, New Haven, June 22, 23; G. W. Andrews, Oberlin, June 24, 25; E. M. Bowman, New York, June 27, 28; W. Middleschulte, Chicago, June 29, 30; F. J. Reisberg, New York, July 1, 2; N. J. Corey, Detroit, July 4, 5; G. E. Whiting, Boston, July 6, 7; W. X. Steiner, Pittsburg, Pa., July 8, 9; G. Smith, New York, July 11, 12; F. P. Fisk, Kansas City, July 13, 14; W. J. Golph, Buffalo, N. Y., July 15, 16; J. W. Andrews, New York, July 18, 19; J. O'Shea, Boston, July 20, 21; J. J. Bishop, Springfield, Mass., July 22, 23; W. S. Sterling, Cincinnati, July 25, 26; S. N. Penfield, New York, July 27, 28; H. O. Thunder, Philadelphia, July 29, 30; A. I. Espsein, St. Louis, Aug. 1, 2; A. Raymond, Boston, Aug. 3, 4; H. Houseley, Denver, Aug. 5, 6; C. S. Howe, New York, Aug. 8, 9; S. A. Gibson, New York, Aug. 10, 11; H. D. Wilkins, Rochester, Aug. 12, 13; A. Guilmant, Paris, Aug. 15 to Sept. 24; W. C. Carl, New York, Sept. 26, 27; F. Dunkley, New Orleans, Sept. 28, 29; E. C. Gale, New York, Oct. 5, 6; W. Kaffenberger, Buffalo, Oct. 7, 8; F. York, Detroit, Oct. 10, 11; W. McFarlane, New York, Oct. 12, 13; R. K. Miller, Philadelphia, Oct. 14, 15; E. E. Truette, Boston, Oct. 17, 18; F. J. Benedict, New York, Oct. 19, 20; J. A. Pennington, Scranton, Oct. 21, 22; A. Ingham, St. Louis, Oct. 24, 25; W. H. Donley, Indianapolis, Oct. 26, 27; J. F. Wolle, Bethlehem, Pa., Oct. 28, 29; W. C. Hammond, Holyoke, Mass., Oct. 31, Nov. 1; Miss G. Sans Souci, Minneapolis, Nov. 2, 3; A. Dunham, Chicago, Nov. 4, 5; R. H. Peters, Spartansburg, S. C., Nov. 7; L. H. Lemare, Pittsburg, Nov. 8, 9, 10; G. H. Chadwick, Chicago, Nov. 11, 12; E. Kreiser, Kansas City, Nov. 14, 15; L. L. Renwick, Ann Arbor, Nov. 16, 17; S. Salter, New York, Nov. 18, 19; L. Holloway, Baltimore, Nov. 21, 22; H. B. Day, New York, Nov. 23, 24; F. C. Chace, Albion, Mich., Nov. 25, 26; A. Scott-Brook, Los Angeles, Nov. 28, 29; C. Galloway, St. Louis, Nov. 30.

ATHLETIC EVENTS.

A series of athletic events has been arranged for the Stadium and athletic field at the w. end of the grounds. The events are under the control of the Department of Physical Culture, and are, in effect, exhibits of that department. They cover the entire field of action in professional and amateur lines, and extend throughout the Exposition period. The chief event is the Third Olympiad.

The Stadium.

A fine athletic field has been laid out for displaying these contests, and a Stadium to accommodate 25,000 spectators has been erected. A gymnasium equipped under direction of experts in physical culture is at the service of competing athletes.

Third Olympiad.

All sports of the World's Fair period are designated as Olympic events by authority of the International Olympic Committee, but special events during the last week of August are known as the Olympiad. Other athletic events are distributed through the seven months, as follows:

Olympic Events.

May	13.	All-Around College Gymnastic Championships.
"	14.	Interscholastic Meet for Missouri only.
"	21.	Open Handicap Athletic Meeting.
"	28.	Interscholastic Meet for the Schools of the Louisiana Purchase Territory.
June	2.	Amateur Athletic Union Handicap Meeting.
"	3.	Amateur Athletic Union Junior Championships.
"	4.	Amateur Athletic Union Senior Championships.
"	6.	Interscholastic Baseball.
"	7.	Interscholastic Baseball.
"	8-9.	Interscholastic Baseball.